

1, Cautions

1.CAUTIONS.....	2
2.IMPORTANTNOTES.....	3
3 SPECIFICATIONS	5
4. LAYOUT DIAGRAM.....	7
5. AWARD BIOS SETUP.....	9
6.SOFTWARE UTILITIES.....	12
7.ABOUT THE DL104PC `S POWER SUPPLY	14
8.Operation of the touch panel.....	16
9. FQA	22
10. TRANSPORT & STORAGE.....	29
.	

Statement:

The manual mentioned the specifications and information of this product only for your reference.If we have any updated information, we would not further notice.

Please take the material object as the standard.



2, Important Notes

● Hint

- 1、 When the touch pc to normal operation or standby , will be the system' s heat dissipation of the normail to the surface, using touch pc , be sure to maintain a smooth flow of cooling holes in order to facilitate heat dissipation, Please avoid overly soft uneven;
- 2、 this Machine has high pressure, Do not open the cabinet in order to avoid an electric shock, Maintenance should be entrusted to professionals
- 3、 Use the soft or neuter cleanser if any smudge in the screen. Don't operate the machine when some dew in the goods after using heating equipment for cold weather.
- 4、 Adjust the volume to appropriate range to hear the emergent call.
- 5、 Clean the products termly for foul and dusty environment.(dust easily lead to system failure)
- 6、 To avoid one machine placed in the vicinity of magnetic materials
- 7、 Do not be one machine be placed in direct sunlight or heat sources mean the office ,such as radiators ,heating equipment ,fire furnaces and other heating objects;

2,Important Notes

8,The illustration and screen display in the manual operation is to show how to operate distinctly. So the screen display in illustration will be different with the actual display in the machine and maybe some operations can't be come true in fact.

9、Operate the products according to the manual operation.Nonlicet operation will be without guarantee to repair.

10. Please read the user' s manual and keep it in a safe place for future use.

11. Operate as you do with a regular computer.

12. Keep the system away from water or high moisture. and its accessories to prevent leaching into the water or were exposed to moisture;

13. Check if any items in the package is missing. It should include

One DL104HPC unit User' s manual

One CD containing the software drivers

One set of support device

14. Use anti-static protection devices.

15. Any problem, please do not disassemble the system, or else it may cancelled the free after-sales service.

3, Specifications

The DL104HPC has been designed with the convenience operation for users. Line Out and Mic In connectors are also on the panel to make multimedia functionality as easy as possible.

The DL104HPC is enhanced with a large panel display and touch panel that commands the operation from the screen. It comes integrated with high-speed Ethernet connection for fast data transfers.

The DL104HPC has an Aluminum Die-cast housing that is reliable and sturdy and can be wall-mounted or used as a desktop machine. The rear design is ergonomically made and minimizes unwanted reflection. Various peripherals are bundled with the DL104HPC.

The DL104HPC can be used in different applications, such as Web based Kiosks, POI Terminals and other applications. It is fully compatible with Intel-base systems with operating systems including , Windows XP, Windows 7or Linux and other OS.

The DL104HPC features a Smart Card Reader interface and a USB slot for Compact Flash that can be used in connection digital cameras, M3 players, PADS and other devices supporting Compact Flash cards.



3, Specifications

Touch Screen: 10.4"4 wire resistive Touch Screen

The motherboard carries Intel® Atom N270 series processors

Chipsets ®: North Bridge: Intel 945GSE(R)/ South Bridge: Intel ICH7

Memory: Supports DDRII 533 Notebook Memory Up to 2GB

Graphics: Integrated GMA950 Graphics Card, Supports DX9.0C

Audio: Integrated ALC 655 Audio Codec/ Supports 2/4 Channel Audio-out

LAN: Integrated Realtek 8111C 1000M Lan chip, supports 10/100/1000M

Storage: 2*SATA 300MB/s ports Interface/ 1*IDE 4 GB or 8 GB SSD

Expansion: 1*PCI Slots

USB 7*USB 2.0 ports

Power Voltage: DC6-36V wide input

Operating Temperature: 0~55C (FDD, HDD, CD-ROM)

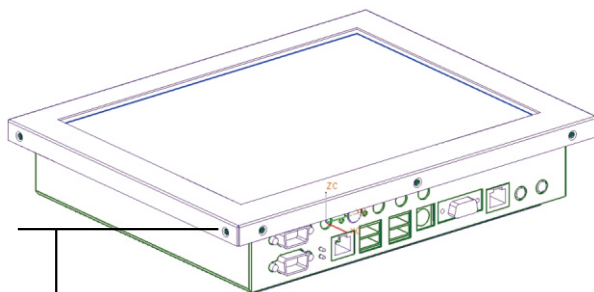
Storage Temperature: -20C~+70C

Dimensions: 225*205*57 mm

Weight: 6Kg



4, LAYOUT DIAGRAM

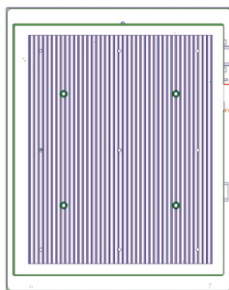


isometric view

50.4 mm

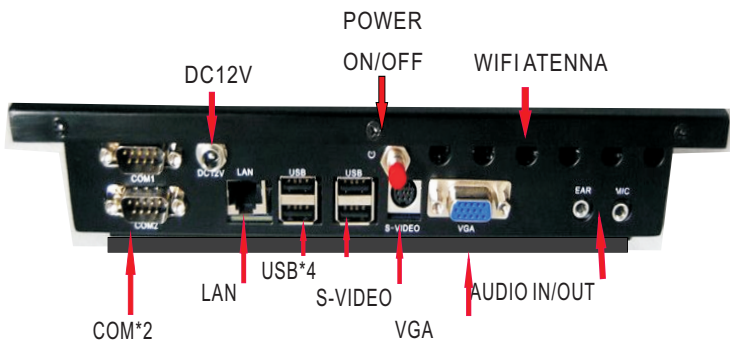
204 mm

257 mm



back view

4, LAYOUT DIAGRAM



bottom view

5. AWARD BIOS SETUP

The DL104HPC uses Award PCI/ISA BIOS for the system configuration. The Award BIOS setup program is designed to provide the maximum flexibility in configuring the system by offering various options, which could be selected for end-user requirements. This chapter is written to assist you in the proper usage of these features.

To access Award PCI/ISA BIOS Setup program, press key during memory testing when first power on. The Main Menu will be displayed at this time.

BIOS Update

In order to meet the needs of customers, we offer special WINDOWS and DOS system BIOS flashing tools, operation are as follows.

WINDOWS Flashing

- a. Flash tool: AFUWIN.EXE
- b. Flash operation: In WINDOWS,run AFUWIN.EXE--click OPEN choose the BIOS file--select Program ALL Blocks--click FLASH.In the writing process, the Keyboard and mouse will be locked until the writing finish,then restart the computer and press F1 to set the CMOS,select Load Optimal Defaults

5. AWARD BIOS SETUP



There will be risks in the BIOS flashing, please do it under the guidance of professional and note the following two points:

1. BIOS file should match the product Model
2. In the writing process, Please don't shut down/restart the computer illegally

BIOS Setup

Because the BIOS software is constantly being updated, the following BIOS setup screens and descriptions may not exactly match what you see on your screen and they are for reference purpose only. Some of the items are not in common used, we suggest not to change them at will and keep the default value.

Enter steps:

- a. Open or restart the computer, you may see "PRESS DEL TO RUN SETUP" in the self-checking screen.
- b. Press the "DEL" key, then enter the BIOS setup screen.

5,AWARD BIOS SETUP

Functional key explanation	
Navigation Key	BIOS Function explanation
↑ ↓	Moves cursor left or right to select Screens
← →	Moves cursor up or down to select items
+ -	To change option for the selected items
<Tab>	To change option
<ESC>	To jump to the Exit Screen or exit the current screen
<F1>	To display the General Help Screen
<F7>	To Abandon current operation
<F8>	To Load the Fail-Safe default values for all settings
<F9>	To load optimal default values for all the settings
<F10>	To save changes and exit the BIOS SETUP UTILITY

BIOS Language Switch

To allow more users to become familiar with the BIOS operation, we introduced Chinese-English bilingual BIOS, users only need to click“F5”after enter the CMOS to easily switch them,it makes BIOSoperation no longer mysterious.

C Note: For more BIOS program details, please refer to the user's manual PDF file in the motherboard driver CD.

6, SOFTWARE UTILITIES

6.1 Install Chipset Driver

- Enter "MB\INF" folder. For 945 series, Double-click "945INF.exe".
- Click "NEXT".
- Select "YES", then Click "NEXT".
- After finish the installation, select "YES", click "FINISH" to restart the computer, then driver will be loaded automatically.

6.2 Install Onboard VGA Driver

- Enter "MB\VGA\945" folder, double-click "WIN2k_xp1417.exe".
- Click "NEXT".
- Select "YES", then Click "NEXT".
- After finish the installation, click "FINISH" to restart the computer, then driver will be loaded automatically.

6.3 Installing Onboard LAN Driver

Enter "System Properties", select the "hardware", open the Device Manager to update the driver.

6.4 Install Onboard Audio Codec Driver

- Enter "MB\SOUND" folder, double-click "WDM_A379.EXE".
- According to tips, click "NEXT", then click "CONTINUE".
- After finish the installation, select "YES", click "FINISH" to restart the computer, then driver will be loaded automatically.

6, SOFTWARE UTILITIES

6.5 Install USB2.0 Driver

Motherboard need to match Windows XP or later, after you have installed Windows XP/2003 operating system,update the latest Microsoft patch, then this system can generally identify your USB2.0 device. You can also login the relevant website to download USB2.0 Driver(It is an executable file), double-click the program to Install the driver.

The motherboards surport WINDOWS2K and later systems,they have different system software, we provide 2K/XP/VISTA system drivers in CD-ROM, take the 2K/XP system installation for example

7, ABOUT THE POWER SUPPLY

7.1、 Functions

Range of input voltage : DC 6.5-36V (the maximum output is 10V-14 V) .

the average power is 100W and its peak power can reach 150W. It can motivate ordinary mainboards. The efficiency is over 87%.

Configurable intelligent control module can be used to set the boot time, shutdown time, high voltage, low voltage detection threshold, triggering start, etc.

Input undervoltage, overvoltage and reverse protection functions.

Output undervoltage, overvoltage and overload protection functions.

PW_OK and PS_ON signal.

Support multiple work mode functions and standard ATX power mode.

Use Socket-connected connections, so that it applies to all kinds of boards, wiring and choice. It also provides mainboard the standard 20 PIN socket, 4 PIN drive socket, signal cable and input socket.

Low interference.

External dimensions : 115mm*45mm*23mm

7, ABOUT THE POWER SUPPLY

7.2. Operation points

Usually, if ACC are not connected, it is unavailable to open power supply, unless the user have set ACC OFF state: open. Use the open button on the mainboard to open car PC.

After startup, power supply defaults the start-up time as 40 seconds, and then it begins to test ACC and voltage state, while ACC OFF or low-voltage is under the setting value. When ACC OFF or low-voltage reaches the setting value, it will send mainboard the shutdown trigger pulse. After the default 100 seconds, if the board is still at booting state, it will send mandatory shutdown pulse and cut off power supply.

Having set the ACC ON automatic startup, if the user manually closes the mainframe, and a short ACC OFF/ON (the user is away the car), power supply will not trigger a boot. Only when ACC OFF time exceeds the setting value, it re-allows ACC ON to start up automatically.

After setting ACC OFF state boot: open, the user can use the remote control gate signals to open mainframe in advance. Pay attention to that after startup, power supply begins to test ACC and voltage state. If ACC isn't opened in time, it will enter the shutdown process again.

8, Operation of the Touch Panel

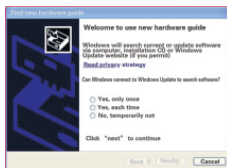
Cautions:

- Users should calibrate and set before using touch panel function. Users should calibrate and set again after using some time normally (such as half a month) or any warp for the touch panel with image. Please calibrate every half a month to make sure the warp is within the allowable range.
- Following installation and calibration of CD drive of touch panel is VERSION3.1.4.2201. The CD drive soft of other section will be some difference for Installation and calibration. Please be patient to install corresponding section to install and calibrate.
- Don't touch the panel directly by hard thing or nail to avoid the scrape of the panel. Operate the machine by being attached touch pen.
- Clean the touch panel by soft cloth to avoid the scrape of the panel. Don't clean the touch panel by organic impregnant to avoid damage of ITO film to effect the cuphotic ratio of the touch panel.

● Installation of the CD Drive:

Start the Car PC after the confirmation of the correct connection. install the drive of the touch panel if it can run natural. Take WINDOWS XP an example to introduce the installation.

1、The PC will display the new USB device when starting PC.



Please Choose "Cancel".

2、Put the attached CD Drive into the DVD-ROM of the PC. If DVD-ROM set the function of auto run, it is as follows:



If DVD-ROM has no auto run function, double hit the "RUN.EXE" files in the root directory of the CD-Drive then the windows also will be as above.

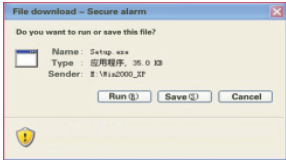
8, Operation of the Touch Panel

3. Start to Install:

Select respond operation system

WINDOWS 2000/XP to Install:

Application program 35.0KB



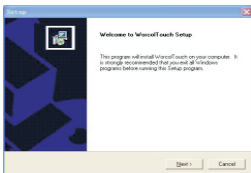
Files from Internet perhaps can help you, but they possibly hurt your computer. If you don't trust its origin, please don't run and save the files. Where is risk?

Select "Run" to Next Step:

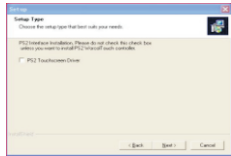


No effective digital signature publisher in this file. You should only run files from trustworthy publisher. How to identify software?

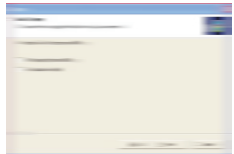
Select "Run" to Next Step:



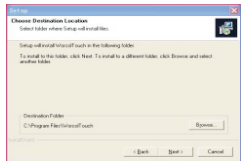
Select "Next" to next step:



Select "Next" to next step:



Select "Next" to next step:

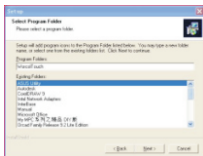


Press "Browse" or tolerant route to

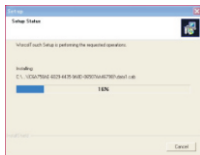
Install then press "Next" to next step:



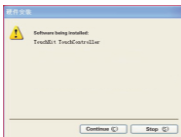
8, Operation of the Touch Panel



Select "NEXT" to Next Step:



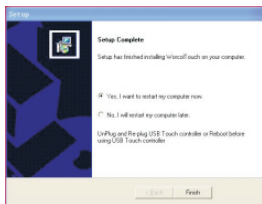
There will be following Image::



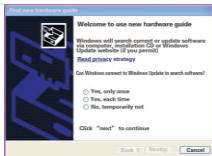
Not pass Windows logo test, not able to verify its uniformity with Windows XP. (Tell me why the test is important)

Continuing makes or is going to make system unstable. Microsoft recommends you to stop installation, and contact supplier to pass Windows logo test.

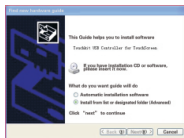
Select "Continue" to next step:



Select "Yes" to restart the PC:



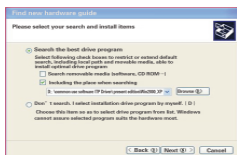
Select "No" to next step to continue to install:



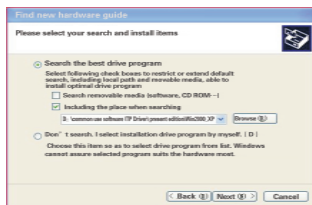
Select "Install from list or designated folder(Advanced)" to next step:



8, Operation of the Touch Panel



Select "Including the place when searching" at the entry of "Search the best drive procedure" then press "Browse" to change the route to "Win2000_XP" to next step



E:\Win2000_XP

Finish to find new hardware guide
Software was installed by the guide for the listed below:

Find new hardware guide

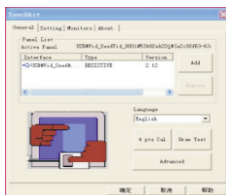


Click "finish" to shutdown the guide
Press "Finish" to complete the operation of the touch panel and the installation of the applied software.

● Calibration of the touch panel:

Calibrate the touch panel after completing the drive.

Start the "Worcolto-uch" to following image:

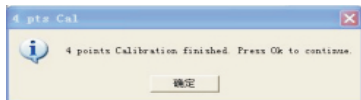


Press "4 pts Cal" to Enter the image:

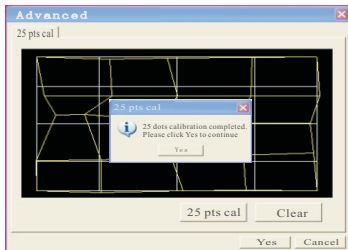


Press the flickering dot by touch pen until flicker stopped:

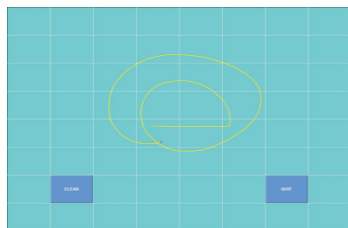
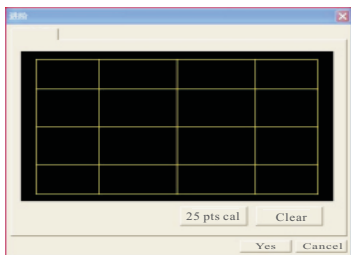
8, Operation of the Touch Panel



Press "Sure" to Complete the "4 pts Cal" Press "Advanced" to enter the more Clear Calibration Image:



Press "Sure" to Complete 25 Pts Cal
Press "Browse Image" to Check the Result



Users can Check the Linearity and Accord by Drawing any Image Such As Above.

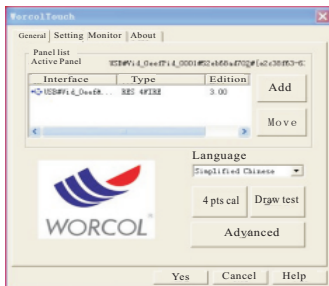
Press "Clear" to Cancel all Image then Press "QUIT" to Exit the Image.



8, Operation of the Touch Panel

●Language Select:

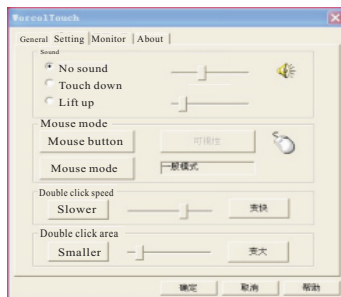
Drive support ten kinds of languages such as English、French、German、Simplified Chinese、Traditional Chinese、Japanese、Korean and so on .Procedure select the optimum language automatically according to the different section of operation. any special requirement , please search by hand:



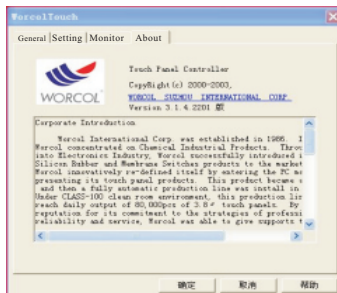
Press the Down-Menu to select the relevant language then the windows will be the selected language automatically.

●Set of the Touch Panel:

Users select "Set" entry to set the touch panel for special function:



"About" entry display the section number of the Drive and the company's information:



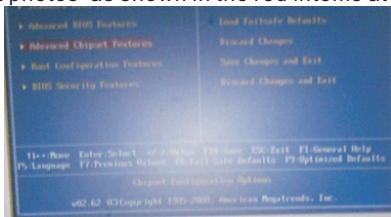
9, FQA

1.0 NONE display after start up : connected an external monitor and USB key board , power boot , can hear the “BEEP”soon as the shourt sound of the keyboard Nunlock indicator will light , but no any display!

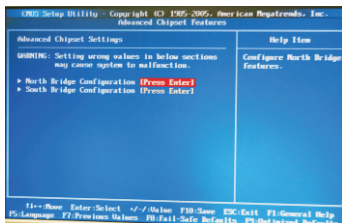
1.2 Hear the long sound of Memory loose,(ROM), their connections and need to disassemble re-insert memory ,now back to the previous step,

1.3, if there is no display also, power failure, so, replace the power supply module ,return to the previous step and again,

1.4, then, waiting 1 seconds , according to “DELETE”,enter the BOIS, select photos as shown in the red items at below:

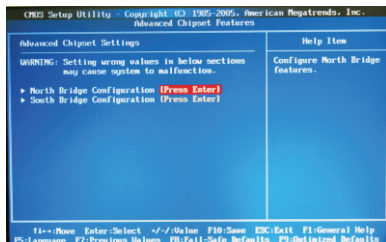


1.5 After entering the first choice with below photos as shown in the red logo,

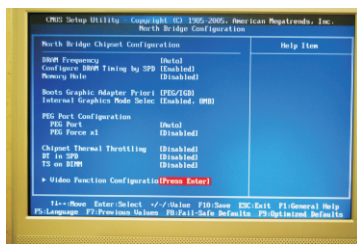


9, FQA

1.6 After entering the first choice below photos shown in the red logo, and followed by below each map with photos the end , press “F10”, confirmed after the completion press “ Enter” , auto matically restart ,



choice the "Press Enter"--North Brighe configuration



choice the Video Functon configuration and “Press Enter”

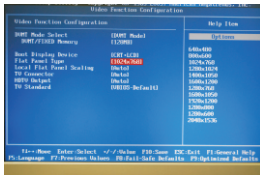
9, FAQ



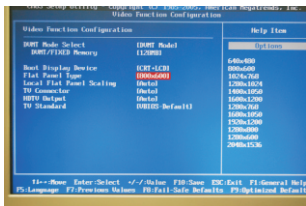
choice the Boot Display Device and changed the option ,it is “CRT+
LCD”,not only “CRT”



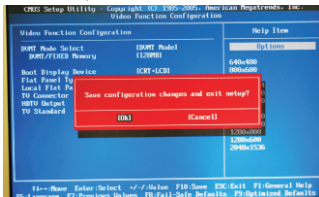
And next , choice the Flat Panel Type ,changed the “1024*768,,any
resolution” to “800*600” ,below :



9, FAQ



so , Press the “F10” and save the Bois setup define, then auto restart the PC ,



2.0 Sound Problem

2.1 No sound

·Double click the speaker-shape icon at the lower right corner and check whether the speaker's volume is set to the mute mode or to the lowest level through the dialogue box.

·Most of the problems on sound are related to the software. If DL104PC's audio unit worked well before, the current sound problem might be caused by the incorrect settings of software.

2.2 Device can't perform recording

·Double click the speaker-shape icon at the lower right corner and check whether the speaker's volume is set to the mute mode or “Line-in” is set to the lowest level through the dialogue box;

- (1). Press [Options] and select [Properties];
- (2). Select [Record] and press [Confirm];
- (3). Press [Confirm] again, and the record volume interface will be popped up.

9, FQA

3.0 Hard Disk Problem

Hard disk can't work or identify normally

·If your hard disk was upgraded not long ago, please make sure the interface of

hard disk is not loose and its placement is absolutely correct. For that purpose,

you can disconnect the hard disk and re-connect it, and then re-start the computer.

·New hard disk needs to be partitioned and formatted. The operating system and driver need to be re-installed.

·Please check the indicator for the hard disk. When you access the files, the indicator should blink intermittently.

·The new hard disk might be defective.

·If your computer was attacked by the static charge or stricken by something, the hard disk might have been damaged.

Hard disk runs too slowly

·If your hard disk has been used for a long time, the great number of files may

cause many disk fragments. In this case, you can reach [Start>Program>

Accessories>System Tools> Defragment Disk] to reorganize the disk. This process may take some time.

·Your hard disk might have been infected by viruses.

Files damaged



9, FQA

Please execute surface scanning process in [Scan Disk] to check the disk. Double

click [My Computer], right click "C:", select [Properties], and then click [Start Check]

in the options of error-checking state in [Tools] to execute the program of disk scanning.

4.0 Display Problem

Monitor Black screen is seen when the system is started.

·Check and make sure your FunTwist Fiono 330 is not in [Sleep] or [Standby] mode. Under such mode, the monitor will be turned off to save power.

When the digital output device (HDMI) is externally connected to LCD TV,

he screen becomes blue and no image is output.

·Please set the output of LCD TV as HDMI output.

Memory Problem

After you install memory module of higher capacity, no increased memory

space is shown when POST performs self detection at the time of startup.

·Memory slot might not have been correctly installed

·Memory card might be broken

·Your system might not be compatible with some memory modules.

9, FQA

Information on error is sent out when the Operating System is running.

·Generally, this problem is related to the software or Windows operating systems.

·Please turn off the application software not currently used and re-start the computer.

·Some software require higher system memory, you will have to upgrade the memory with higher capacity.

10, TRANSPORT & STORAGE

1, Do not subject to pressure and bending deformation,

2, Do not subject to vibration, impact

3, Anti-static

4, Relative humidity: <80%

5, Storage Temperature: -20--+ 80 °C

6, Use Temperature : 0- +50°C